

KNOW YOUR ENEMY

GREEN DAY

♩ = 130 INTRO

CHORUS

VERSE

CHORUS

BRIDGE

The Bridge section consists of two staves of guitar tablature. The first staff contains four measures of music, each starting with an asterisk on the first string. The second staff contains four measures, with the final two measures featuring a dense sixteenth-note run.

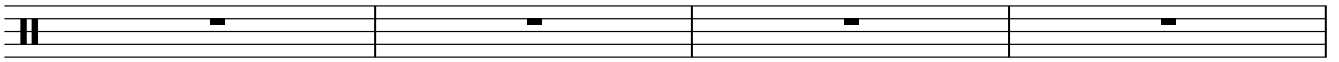
GUITAR SOLO

The Guitar Solo section consists of six staves of guitar tablature. The first five staves feature a consistent rhythmic pattern of eighth notes with asterisks on the first string. The sixth staff concludes the solo with a double bar line and repeat dots, followed by a melodic phrase.

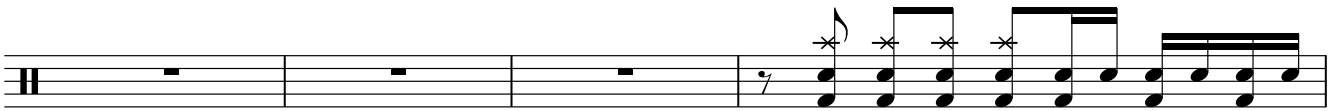
VERSE

The Verse section consists of two staves of guitar tablature. The first staff has four measures of music, each starting with an asterisk on the first string. The second staff has four measures, with the final two measures featuring a dense sixteenth-note run.

BREAK



CHORUS



OUTRO

