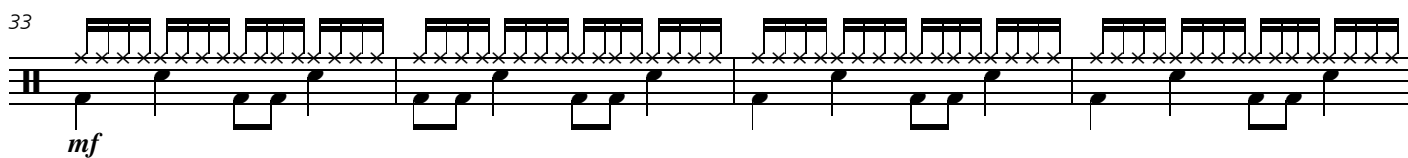
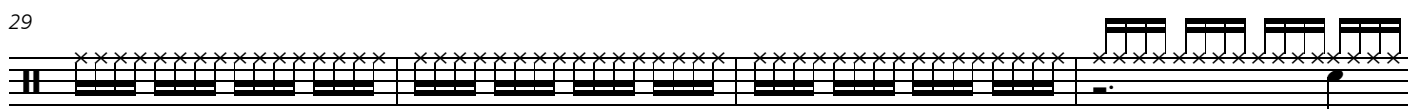
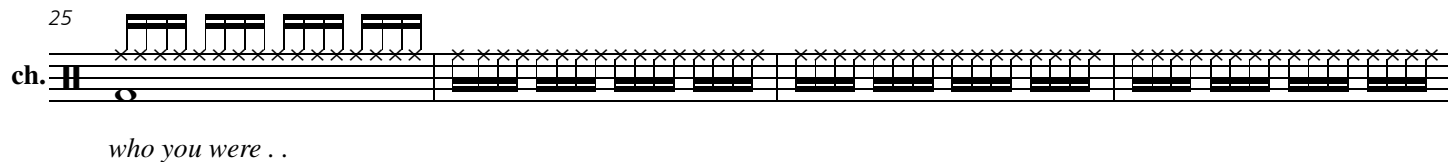
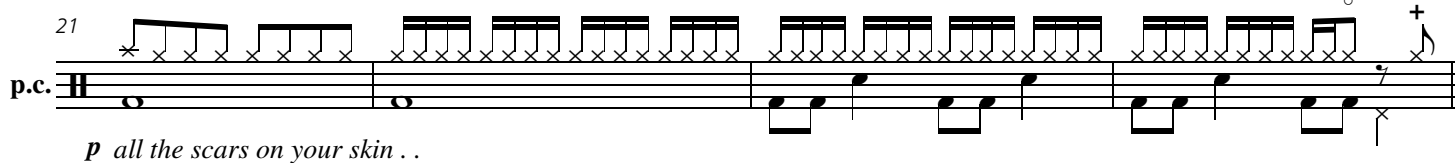
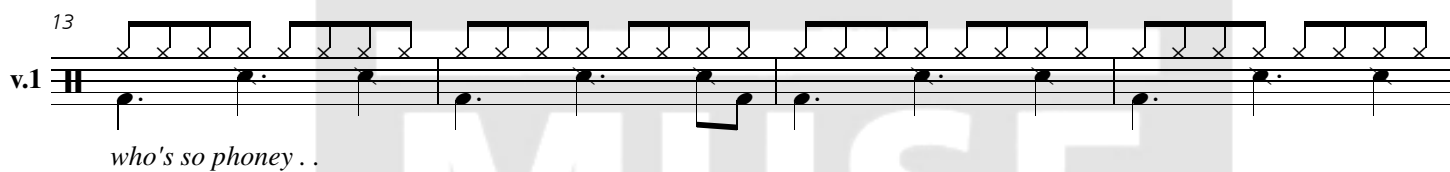
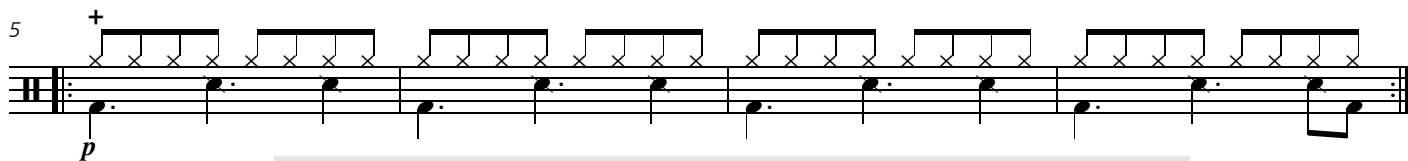
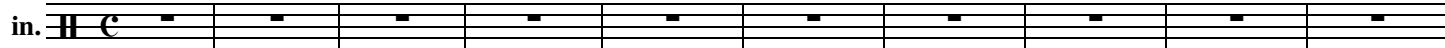


# Screenager

♩=77

1



37

Musical staff for measure 37, featuring a complex rhythmic pattern with many sixteenth notes and rests.

41

br.

*p*

Musical staff for measure 41, labeled 'br.' with a dynamic marking of *p*. It features a rhythmic pattern with many sixteenth notes.

45

v.2

*hide from the mirror . .*

Musical staff for measure 45, labeled 'v.2' with the lyrics *hide from the mirror . .*. It features a rhythmic pattern with many sixteenth notes.

49

Musical staff for measure 49, featuring a rhythmic pattern with many sixteenth notes and rests.

53

p.c.

*mp for all the holes . .*

Musical staff for measure 53, labeled 'p.c.' with the lyrics *mp for all the holes . .*. It features a rhythmic pattern with many sixteenth notes.

57

ch.

*who you were . .*

Musical staff for measure 57, labeled 'ch.' with the lyrics *who you were . .*. It features a rhythmic pattern with many sixteenth notes.

61

Musical staff for measure 61, featuring a rhythmic pattern with many sixteenth notes.

65

*play 3 times*

*mf*

Musical staff for measure 65, featuring a triple repeat sign and the dynamic marking *mf*. It features a rhythmic pattern with many sixteenth notes.

79

out.

*p*

*rall.*

Musical staff for measure 79, labeled 'out.' with a dynamic marking of *p* and a *rall.* marking. It features a rhythmic pattern with many sixteenth notes.

83

Musical staff for measure 83, featuring a long note with a fermata and a double bar line.